

14-DAY BOTSWANA AND ZIMBABWE WILDLIFE SAFARI

**Flying safari in Botswana to the Okavango Delta
Flying Safari to Mana Pools and visit to Victoria Falls - Zimbabwe**

Program highlights:

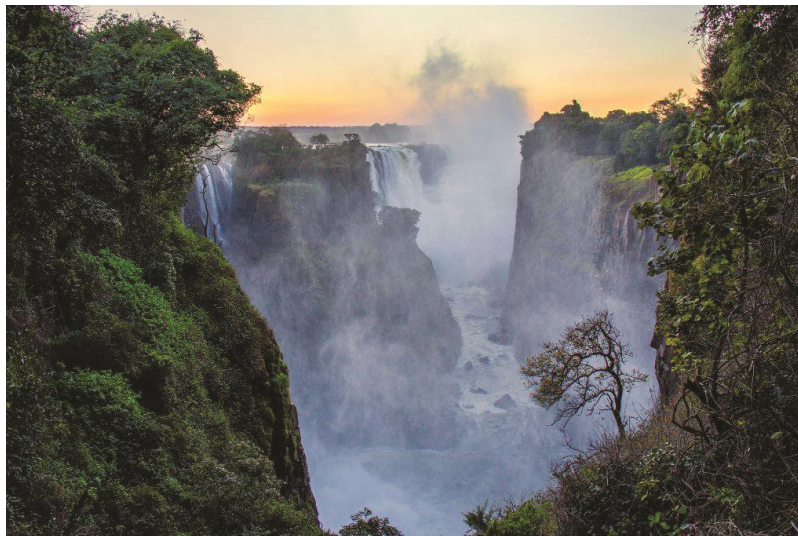
- ❑ **The combination of the traditional game-viewing in Botswana along with the active walking and canoeing safari in Zimbabwe makes this program ideal for adventurers!**
- ❑ **Begin with amazing game viewing opportunities that Botswana offers in the Okavango Delta.**
- ❑ **A safari highlight is Mana Pools.**
- ❑ **Visit to Victoria Falls with a full day to allow more than just viewing the Falls.**
- ❑ **Small charter flights are utilized to reach these remote corners of Botswana and Zimbabwe.**



| Day | Destination | Accommodation |
|-------|---|---|
| 01 | Fly USA – Johannesburg | Travel |
| 02 | Johannesburg | Southern Sun O. R. Tambo International Airport Hotel |
| 03 | Fly Johannesburg - Maun – Okavango Delta | Xigera Camp, Kwetsani Camp, Tubu Tree Camp, Little Tubu or Little Vumbura or Qorokwe Camp |
| 04 | Okavango Delta | Xigera Camp, Kwetsani Camp, Tubu Tree Camp, Little Tubu, Little Vumbura or Qorokwe Camp |
| 05 | Fly Okavango Delta – Periphery of Moremi Reserve | Chitabe Camp or Chitabe Lediba |
| 06 | Periphery of Moremi Reserve | Chitabe Camp or Chitabe Lediba |
| 07 | Periphery of Moremi Reserve | Chitabe Camp or Chitabe Lediba |
| 08 | Fly Delta – Kasane – Victoria Falls Afternoon at leisure | Victoria Falls Hotel or Elephant Camp or Victoria Falls River Lodge |
| 09 | Day at leisure – Victoria Falls | Victoria Falls Hotel or Elephant Camp or Victoria Falls River Lodge |
| 10 | Fly Victoria Falls – Mana Pools Afternoon activity | Vundu Tented Camp |
| 11+12 | Mana Pools | Vundu Tented Camp |
| 13 | Fly Mana Pools – Harare – Johannesburg - USA | |
| 14 | USA | |



| Destinations | Base Package Accommodations | <i>Optional Upgrade</i> | <i>Optional Upgrade</i> |
|----------------------------|---|-------------------------|----------------------------|
| Johannesburg | Southern Sun O.R. Tambo International Hotel | | |
| Okavango Delta | Xigera Camp | Kwetsani | Tubu Tree / Little Tubu |
| | | Little Vumbura | Qorokwe Camp |
| Periphery of Moremi | Chitabe or Chitabe Lediba | | |
| Victoria Falls | Victoria Falls Hotel | Elephant Camp | Victoria Falls River Lodge |
| Mana Pools | Vundu Tented Camp | | |



ITINERARY

DAY 01 USA/JOHANNESBURG

Depart the USA on your overnight flight to Johannesburg.

DAY 02 JOHANNESBURG

On arrival you will be met and transferred to your airport hotel.

Johannesburg is the largest and most cosmopolitan city in South Africa and is the center of the gold and diamond industry. Johannesburg began as a mining town when the largest deposits of gold in the world were discovered in the Witwatersrand in 1886. This “City of Gold” (locally known as “Egoli,”) is now the country’s largest commercial center and the country’s main gateway for overseas visitors. The city itself has a population of approximately 2 million, while the total urban area including Soweto (SOuth WEstern TOwnships) has a population of approximately 4 million.

The **Southern Sun O.R. Tambo International Airport Hotel** is a mere 600 yards from South Africa’s busiest airport. The hotel’s elegant surroundings greet you and 366 rooms are spacious and offer every modern comfort. The Bernoullis Restaurant tempts diners with an extensive selection of international dishes from both the buffet and a la carte menu, while The Bernoullis Wine bar is the perfect setting for a pre- or post- dinner drink as it is open 24 hours a day.

Accommodation: Southern Sun O. R. Tambo International Airport Hotel (B)



DAY 03 JOHANNESBURG/MAUN/OKAVANGO DELTA

This morning make your way back to the airport by the courtesy hotel shuttle bus. Depart on the scheduled inter-Africa flight to Maun, Botswana. On arrival you will board your scheduled charter flight to your first camp located in the Okavango Delta.

Please Note there is a luggage limit of 44lbs (20kg) per person on the charter flight so please pre-pack your luggage accordingly in a soft-sided bag. Scheduled Charter flight times are estimates and may include multiple stops



The Okavango Delta, covering over 6,000-square-miles (15,000-km²), is a natural mosaic of palm-fringed islands, open savannah, flowing rivers, crystal-clear lagoons and floodplains sprinkled with water lilies, and gigantic baobab and jackalberry trees.

The Okavango River originates in the central African highlands, located in Angola which is about 600 miles (1,000 km) northwest of Botswana, then it fans out into the Kalahari Desert to create a vast system of thousands of waterways, separated by innumerable islands, and it eventually disappears into the Kalahari sands.

Game viewing for the larger land mammal species is excellent in many parts of the Delta. Large herds of buffalo, elephant, giraffe and a variety of antelope are often seen. Lion, leopard, cheetah and other predators are also frequently encountered. Hippo and crocs are found in the waterways and bird lovers will relish the incredible variety.



| Destination | Base Package Accommodations | Optional Upgrade | Optional Upgrade |
|----------------|-----------------------------|------------------|-------------------------|
| Okavango Delta | Xigera Camp | Kwetsani | Tubu Tree / Little Tubu |
| | | Little Vumbura | Qorokwe Camp |

The Xigera area offers the best of both worlds and is one of the most densely populated wetland areas for sitatunga and red lechwe, game concentrations all depend on the flow of the water. Big game that can be found in the area includes elephant, lion, leopard and buffalo. Pels fishing owl is a favorite amongst birders as well as African and lesser jacanas.

Xigera Camp sits on a large island in the central-western area of the Delta, within the Moremi Reserve. The

Moremi Reserve rates as one of the best and most beautiful in southern Africa and both game and birds are diverse and plentiful. Xigera Camp features eight large twin-bedded, luxury tented rooms with en suite facilities. Activities include mokoro (dugout canoe) trips to explore the crystal clear channels, islands and waterways, walking on islands, and limited game drives.



A feature unique to Xigera is the wooden footbridge connecting Xigera Island to the island next to it. You are often treated to close-up views of lion, hyena or leopard padding across the bridge as they move between islands. The camp "newspaper" (a sand pit built into the bridge to capture paw prints) is "read" each morning and provides information on unseen nightly visitors to camp.

Accommodation: Xigera Camp (Full Board)

OR

Kwetsani Camp is a ten bedded luxury tented camp in the Jao Concession. The large elongated island is heavily wooded with palm, mangosteen and fig trees. The camp is raised on stilts beneath the shady canopy, overlooking the expansive plains. The five spacious tented "tree-house" chalets are built under a "palm-frond thatch" roof, and all have en suite facilities including a shower, flush toilet, basin and outdoor shower.

Activities include day and night game drives in open 4x4 vehicles, as well as walking with an armed guide. Boating, fishing and mokoro trips are also offered. A variety of habitats ensures diverse and interesting game viewing. Wildlife seen here includes elephant, lion, zebra, red lechwe, giraffe, tsessebe, wildebeest as well as kudu, impala, leopard and bushbuck.

Accommodation: Kwetsani Camp (Full Board)



OR

Tube Tree Camp, in the Jao Concession, is a traditional style tented safari camp built on raised wooden platforms to take best advantage of the beautiful view over the floodplains. The camp sleeps a maximum of 10 guests in five large, comfortable tents, each with a small, private deck in front, en suite bathroom and private outdoor shower. The main dining and lounge areas are also large tents on raised platforms, with an outdoor area built under the canopy of a large Marula tree.

Activities at Tube Tree Camp include day and night game drives in open 4x4 vehicles, as well as walking with an armed guide. When the Okavango's annual flood is at its highest (normally May to late September), boating, fishing and mokoro trips are also offered. A variety of habitats ensures diverse and interesting game viewing. Wildlife seen here includes elephant, lion, zebra, red lechwe, giraffe, tsessebe, wildebeest as well as kudu, impala, leopard and bushbuck.

Accommodation: Tube Tree Camp (Full Board)



OR

Little Tubu is in the Jao Concession and located near its sister camp, Tubu Tree. The intimate camp features just three tents each with a small, private deck in front, en suite bathroom and private outdoor shower. The main lounge area has a unique bar built into a waterberry tree and there is an expansive deck overlooking the floodplains.

Activities at Little Tubu include day and night game drives in open 4x4 vehicles. When the Okavango's annual flood is at its highest (normally May to late September), boating, fishing and mokoro trips are also offered. A variety of habitats ensures diverse and interesting game viewing. Wildlife seen here includes elephant, lion, zebra, red lechwe, giraffe, tsessebe, wildebeest as well as kudu, impala, leopard and bushbuck.

Accommodation: Little Tubu (Full Board)



OR

Little Vumbura Camp sits on an island and is accessed by boat, making the approach to camp unique and exciting. Water based activities with mokoros are a highlight of your stay and offered year-round. Walks on the island give you an opportunity to explore Africa from a different perspective. The game viewing is consistently good all year round and the open vehicles allow day and night drives, viewing animals in the savannah areas.

Little Vumbura Camp has six large, luxury-tented rooms each with full en suite facilities. A series of slightly raised walkways connect tents and still allow visiting elephants and hippos access to the vegetation. The main area has a decked lounge, library, open fire pit, dining area and swimming pool. It offers both water and land activities including game viewing by mokoro, day and night game drives in 4x4 Land Rovers and walks.

Accommodation: Little Vumbura (Full Board)



OR

Qorokwe Camp is located on the 64,900-acre Qorokwe Concession in the south-eastern region of the Okavango Delta. This exclusive region features diverse habitats, from acacia woodlands to vast floodplains and is home to a variety of game including zebra, giraffe, Cape buffalo and a local pride of lion. Camp accommodations include eight tented suites and one family suite with its own plunge pool.

The main area has been built on raised platforms and overlooks a lagoon and includes the dining area, lounge, library and bar. Game viewing activities include open-vehicle drives, nature walks, bird watching and exploring by boat or mokoro.

Accommodation: Qorokwe Camp (Full Board)



DAY 04 OKAVANGO DELTA

Enjoy morning and afternoon activities from your camp.

Accommodation: Xigera Camp, Kwetsani Camp, Tubu Tree Camp, Little Tubu, Little Vumbura or Qorokwe Camp (Full Board)



DAY 05 OKAVANGO/PERIPHERY OF THE MOREMI RESERVE

Leave as the sun comes over the horizon and enjoy an early morning game drive. Depart on your scheduled charter flight to your next camp which borders the Moremi Reserve.

| Destinations | Base Package Accommodations |
|---------------------|-----------------------------|
| Periphery of Moremi | Chitabe or Chitabe Lediba |

Chitabe sits in a private concession that borders the Moremi Reserve, which is part of the Okavango Delta. The area offers exciting game viewing with diverse habitats ranging from open flood plain to permanent waterways and lagoons. All the Okavango big game can be found here, and there are excellent chances of spotting predators on the game drives including lion and wild dog. Buffalo and elephant are in this area, as well as good concentrations of zebra, wildebeest, giraffe and all the plains game.



Chitabe Camp is a 16 bedded tented camp raised off the ground on wooden decks and linked by elevated walkways; it also has a plunge pool. Each tent has en suite facilities. Day and night drives and morning walks are offered.

Accommodation: Chitabe Camp (Full Board)



OR

Chitabe Lediba consists of five spacious East African style tents each with an en suite bathroom with flush toilet, a shower and basin with hot and cold running water. Each room is on a raised deck and has an outdoor shower as well. There is a dining area, lounge and pub with superb views overlooking the surrounding flood plains, and a small pool. Activities include game walks, day and night game drives in open 4x4 vehicles.

Accommodation: Chitabe Lediba (Full Board)



DAY 06+07 PERIPHERY OF THE MOREMI RESERVE

Enjoy two full days of game viewing.

Accommodation: Chitabe Camp or Chitabe Lediba (Full Board)



DAY 08 OKAVANGO DELTA/KASANE/VICTORIA FALLS

This morning you will transfer to the airstrip for your scheduled charter flight to Kasane where you will clear immigration and continue by vehicle to Victoria Falls, Zimbabwe.

The world-famous Victoria Falls were discovered in 1855 by Scottish explorer, David Livingstone. As news of the falls spread it attracted traders and a small settlement, originally called “Old Drift” was established on the Zambian side of the falls. A bridge was built over the Zambezi Gorge as part of the Cape-to-Cairo railway in 1902 making it possible for people to visit the village of Victoria Falls. In 1906 the iconic Victoria Falls Hotel was built and put the thriving village on the map. It officially became a town in 1972. Today it is the jumping off or finishing point for many safaris and offers a variety of exciting activities such as world-class white water rafting and elephant interactions.

The afternoon is a good time to view the falls (park entry fee US\$30 per person).

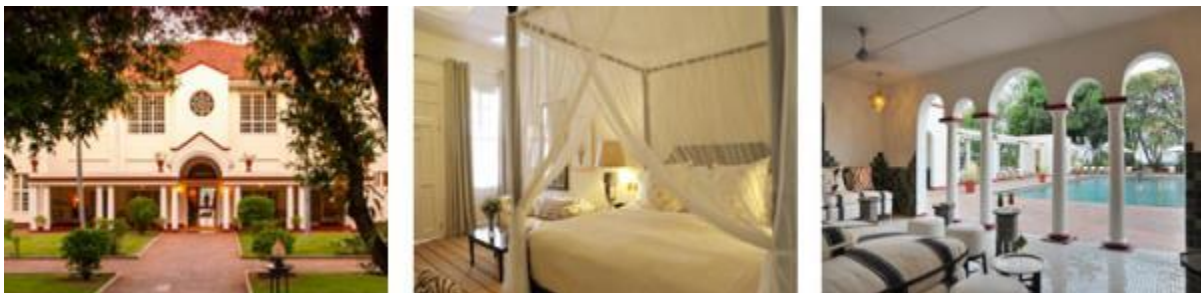
Victoria Falls is approximately 5600 feet wide, twice the height of Niagara Falls, and one and one half times as wide. It is divided into five separate waterfalls: Devil's Cataract, Main Falls, Horseshoe Falls, Rainbow Falls and Eastern Cataract, ranging in height from 200-355 feet. Fortunately the area immediately around the falls has not been commercialized, and there are unobstructed views from many vantage points connected by paved paths. Be prepared to get wet as you walk through the rain forest surrounding the falls, a result of the continuous spray. A path called the Chain Walk descends from near Livingstone's statue into the gorge of the Devil's Cataract, providing an excellent vantage point.



| Destinations | Base Package Accommodations | Optional Upgrade | Optional Upgrade |
|----------------|-----------------------------|------------------|----------------------------|
| Victoria Falls | Victoria Falls Hotel | Elephant Camp | Victoria Falls River Lodge |

The **Victoria Falls Hotel** has maintained much of its colonial elegance with its graceful architecture, spacious terraces and colorful gardens. The hotel has 161 air-conditioned rooms with private facilities, swimming pool and tennis courts and is only a ten-minute walk from the falls. You may enjoy dinner in the elegant Livingstone dining room or the Jungle Junction restaurant that offers a unique cultural dancing and ethnic eating experience.

Accommodation: Victoria Falls Hotel (B) – *Stables Signature Wing Room*



OR

Elephant Camp is located on a private concession bordered by the Masuie River and Zambezi gorges. Nine luxury suites feature private viewing deck and plunge pool, air-conditioning, mini-bar and en suite bath with indoor/outdoor showers. Two complimentary transfers to Victoria Falls town are included daily. The main lounge area invites you to enjoy the views of Victoria Falls' spray and the gorges which separate Zimbabwe and Zambia. Meals are served in the open-air dining room.

As a guest of Elephant Camp you have the opportunity to meet the elephants from the onsite elephant sanctuary. The camp also has an orphaned cheetah named Sylvester who you may see during your stay.
Accommodation: Elephant Camp (Full Board)



OR

Victoria Falls River Lodge is located within the Zambezi National Park directly on the Zambezi River. The lodge features 13 luxurious tents with indoor-outdoor showers, en suite bathroom, air conditioning and private decks to enjoy the view of the spray from the falls in the distance. Eight of the tents have their own plunge pools. One game activity per day is included in your stay, either a game drive in the Zambezi National Park or a river cruise (snacks and drinks are served on both activities). Walking safaris with an armed guide and canoeing on the Zambezi River are also available for an additional fee. Roundtrip transfers to Victoria Falls town are offered.

Accommodation: Victoria Falls River Lodge (Full Board) – *Luxury Tent*



DAY 09 VICTORIA FALLS

Enjoy the day at leisure.

Optional activities you may book for an extra charge include:

- 1) Tour of the falls and Market Visit (park entry fee \$30.00 included)
- 2) A sunset cruise upstream on the Zambezi River
- 3) "Flight of the Angels" by helicopter (park entry fee \$10.00 payable direct)
- 4) Day of white-water rafting (5th class) (park entry fee US\$10.00 payable direct)
- 5) Bungee jump off Victoria Falls Bridge (not Monday)
- 6) Half day High Wire (includes Gorge Swing, Foofie Slide and Flying Fox)
- 7) Livingstone Island Lunch (Zambia visa fee applicable) (*Subject to water levels*)

- 8) Morning Breezers and swimming on the edge of the falls (Zambia visa fee applicable) (*Subject water levels*)
- 9) Elephant interaction with a family herd at the Elephant Sanctuary & Orphanage
- 10) Rhino game drive at Stanley & Livingstone Private Game Reserve
- 11) Full day game viewing excursion to Chobe National Park (includes lunch)
- 12) Half day canoeing trip (above Victoria Falls)
- 13) Fishing on the Upper Zambezi above Victoria Falls
- 14) Experience the African life of a local school at Monde and rural village of Mpisi, Ncube or Ngwenya. (half-day)
- 15) Visit one of the schools that we sponsor in the area – Jabulani, Chamabonda and Chinotimba.
- 16) Visit Rose of Charity Orphanage in Victoria Falls.
- 17) Evening African Spectacular Dancing and dinner at Boma Restaurant or dinner at Jungle Junction
- 18) Lunar Rainbow Tour – view Victoria Falls during a full moon to see a rainbow at night
- 19) Overnight rafting trip down the Zambezi River (an extra night and park fees required)

Accommodation: Victoria Falls Hotel (B) – *Stables Signature Wing Room* or Elephant Camp (Full Board) or Victoria Falls River Lodge (Full Board) – *Luxury Tent*



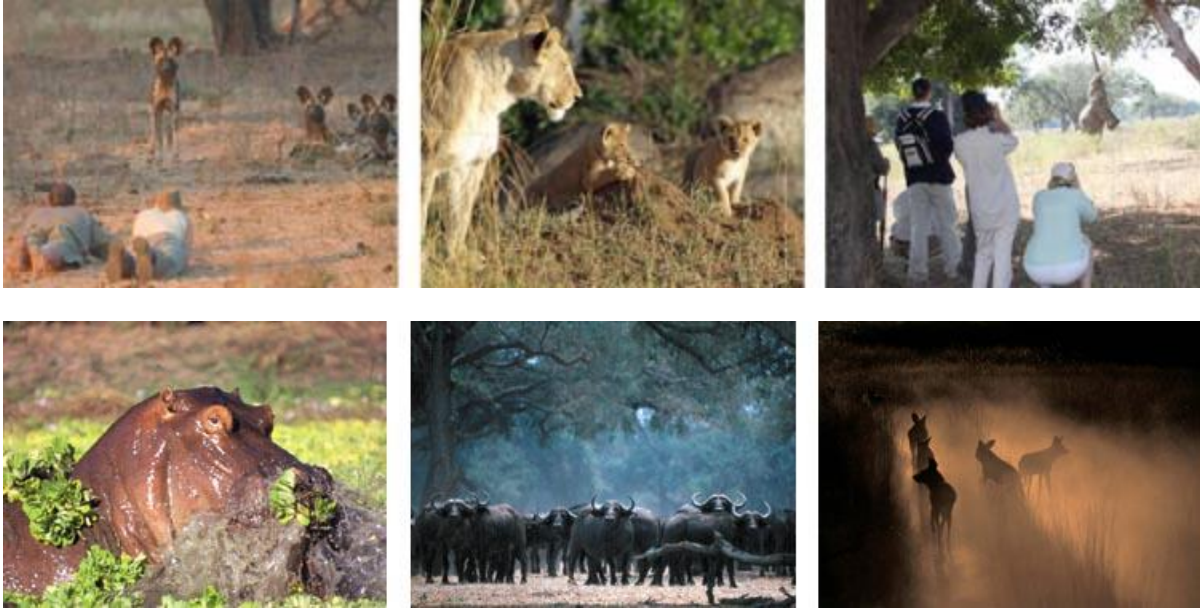
DAY 10

VICTORIA FALLS/MANA POOLS

This morning you will be transferred to the airport for your scheduled charter flight to Mana Pools. On arrival you will be met by your guide and continue to camp.

Mana Pool National Park covers a section of the Middle Zambezi Valley, extending from the Zambezi River in the north to the escarpment in the south. The Zambezi Valley is a western extension of the Great Rift Valley.

The pools of Mana are lakes that mark former courses of the Zambezi. They are refilled by the swollen river during the rains and are home to populations of hippo, crocodiles and birds. During the winter months, shortages of food and water force the animals back towards the Zambezi River. This is prime time to game view.



Vundu Tented Camp is located within the park and has eight large tents (including one 2-bedroom/2-bath tent) with open-air en suite shower and toilet. The main lodge area is set in a canopy of the riverine trees on the bank of the Zambezi River. Raised 10 feet off the ground, it is the ideal place to enjoy a cocktail and watch the elephants feed on the bushes below you or the monkeys in the nearby trees. The thatched roof provides shade from the mid-day sun.

From your camp you will take leisurely canoeing safaris, game drives and walks to explore and appreciate the rich floodplain and river channels of Mana Pools National Park.
Accommodation: Vundu Tented Camp (Full Board)



DAY 11+12 MANA POOLS

Enjoy two days of activities.

Wildlife is excellent in the area, and there is diverse game activities offered, including wildlife-viewing drives in 4x4 vehicles, boats, canoes, and fishing. Daily nature walks are available with a professional guide. Kudu, zebra, impala and waterbuck can be seen on the surrounding plains, and elephants take advantage of the plentiful Albida (Ana) trees in the area. Predators including lion, wild dog, leopard, and cheetah, are often sighted, and large concentrations of buffalo can be found along the river's edges. Bird watching tends to be very good, with the river attracting large numbers of waterbirds.

Accommodation: Vundu Tented Camp (Full Board)



DAY 13 MANA POOLS/HARARE/JOHANNESBURG/USA

Depart on your scheduled charter flight to Harare. Connect with the scheduled inter-Africa flight to Johannesburg. Continue onward overnight to the USA.

**DAY 14 USA
WELCOME HOME!**

2018 LAND ARRANGEMENTS:

Based on Xigera, Chitabe, Victoria Falls Hotel and Vundu Tented Camp ~

| | May/Nov | June | Jul – Oct |
|----------------------------|-----------------|------------------|------------------|
| Per Person Sharing | from \$9,350.00 | from \$11,895.00 | from \$12,395.00 |
| Optional Upgrades | | | |
| Kwetsani | + \$850.00 | + \$1075.00 | + \$1075.00 |
| Tubu / Little Tubu | + \$850.00 | + \$1075.00 | + \$1075.00 |
| Little Vumbura | + \$895.00 | + \$1350.00 | + \$1350.00 |
| Qorokwe Camp | + \$895.00 | + \$1350.00 | + \$1350.00 |
| Elephant Camp | + \$415.00 | + \$415.00 | + \$350.00 |
| Victoria Falls River Lodge | + \$350.00 | + \$575.00 | + \$515.00 |

** All rates are per person sharing a room*

Reduction for travel to Vundu Oct 16-31
Single supplement

Less \$400.00 per person double
Please Request

SPECIAL AAC SAVINGS – Based on Wilderness Safaris Botswana camps ~

*** Add a 6th night in Botswana at select camps and travel between January 11-March 2018, enjoy “Stay 6-Pay 5” savings.**

(Discount applies to specific camps) Ask your Safari Consultant for details and personalized itinerary pricing!

AIR ARRANGEMENTS: (subject to change)

Please note the following sample airfares. Lower promotional airfares are offered throughout the year so please take a moment to contact our "in house" air department for even better pricing options!

INTERNATIONAL AIR:

Economy Class:

From \$1,299.00-\$2,299.00 per person (low-high season)

Business Class:

From \$5,399.00 per person (via Europe or on SAA) (low season)

New York/Johannesburg/New York - Please call for add-on fares from your departure city.

INTER-AFRICA:

From \$ 595.00 per person (approx)

Johannesburg/Maun - Harare/Johannesburg

LAND COSTS INCLUDE:

- Accommodations
- All meals and safari activities (Full Board)
- Airport, road and scheduled air charter transfers between camps
- Park and guiding fees
- Meals as stated: breakfast (B), lunch (L) and dinner (D)
- Local drinks in camps
- Laundry in camps

NOT INCLUDED:

- Tips to staff and guides
- Other drinks and laundry
- Optional tours and park fees in Victoria Falls
- Departure and Airport taxes (payable directly)
- Other personal expenditure
- Scheduled air fares
- Travel insurance
- Zimbabwe visa

NOTES:

1) Vundu Camp is seasonally open May-November 2018.

2) There is the option to replace Vundu Camp with a traditional mobile canoe safari. Please request additional details from your Safari Consultant.

You will be briefed on your canoe trip, which begins at the western edge of the park and finishes at the eastern end of the park. You are doing your own canoeing with the current in sturdy 18ft Canadian canoes. Paddle your way through the sand banks and islands, watching pods of hippo or elephants wallowing at midday to cool off.



As there is a Land Rover back-up vehicle, game drives are taken, along with walks to explore and appreciate the rich floodplain and river channels of Mana Pools National Park. This is not a safari to prove how many kilometers you can paddle in a day. This afternoon you will paddle approximately 7 miles to your campsite. All luggage and gear will be driven ahead to the camp, which is set up in advance. You arrive at your canoe site around dusk where refreshments await you.

Accommodations are in safari tents with beds, linen and mosquito netting. The shower tent and toilet tent are situated en suite to each sleeping tent. There is full camp service to provide hot water and all your meals.

Accommodation: Mobile Tented Camp (Full Board)



Trip Report:

We wanted to thank Lynne and the rest of the team. We just got back from Zimbabwe. The advice we received was spot on. Our only regret is that we didn't stay a little longer.

Vundu was, of course, totally different as a smaller family-run rather than corporate camp...The resident managers, Marie and Alex, were wonderful. They went overboard in making us feel at home. In fact, Marie found out that we would be celebrating our anniversary later in the week. She organized a surprise candlelight dinner for 2 in front of our tent along the Zambezi. It was amazing. They set up a little bar (a little of everything from spirits to sparkling wine) and appetizers by a fire and 2 chairs. They brought a 3 course meal down to a candlelight table they had carried down. Our guide joined us briefly as an elephant decided to eat his way walking by our tent mid dinner...Henry was an excellent guide and took us canoeing; we had a brief moment of excitement when a bull hippo turned around and decided to chase us. Henry's approach to walking was to drive around until we saw something interesting then get out and approach it by foot so we had lots of short walks. We walked up to the painted dog den...

Elephant Camp was a little like a Ritz Carlton! It was a little unlike being in Africa but for the end of our trip (and our actual anniversary) it was great...Sylvester, their resident cheetah ambassador was a real highlight. We went on a 2 hour off leash walk with him in the park. He was habituated to people enough to let you touch him but otherwise he really ignored you rather than acting like a pet. We also met their elephants and fed them (but didn't ride them). They gave us a tour of the research and animal rescue facility that is independent but on the Elephant Camp's grounds and that was fascinating.

We would do it all again!

Thanks,

Gerald and Karen Striph