

# More nights on us... well into 2010!



The Wilderness Safaris “More nights on us!” basket of value of free nights and additional value for guests continues its success thanks to its great popularity and your support.

Once again, we are extending the offers that create the most value for your clients and our guests, and are delighted to include a few more exciting camps within our “Stay for 3 and Pay for 2”!

In this way, our partnering with you will continue to yield savings and create journeys, so as to enhance our businesses to mutual benefit.

## AN EXTRA NIGHT ON US... STAY FOR 3 PAY FOR 2 (33% SAVING)



On any new booking of 2 full paying nights per person, the 3rd night at the same camp is Free of Charge until 15 March 2010.

Camps featured:

**Botswana:** Xigera, Jacana, Seba, DumaTau, Selinda, Kalahari Plains Camp and Abu Camp. (Abu Camp is operating until 31 Dec 2009 at which point it is closed for refurbishment.) **Now introducing: Savuti, Tubu Tree, Kwetsani and Vumbura Plains**

**Zambia:** The River Club, Toka Leya

**Zimbabwe:** Little Makalolo

**Namibia:** Ongava Lodge, Desert Rhino Camp, Andersson’s Camp, Doro

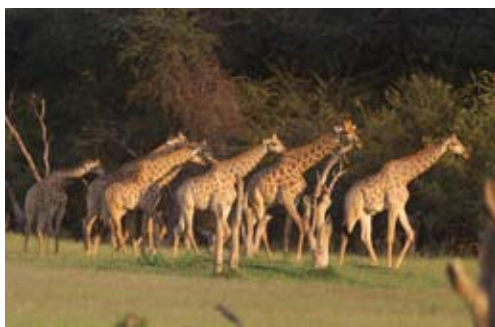
Nawas, Lianshulu Lodge, Kulala Desert Lodge, Kulala Wilderness Camp. **Now introducing Damaraland Camp and Serra Cafema.**

The applicable travel dates vary depending on the camp and the season (most being valid 02 November 2009 to 15 March 2010). Please contact your journey specialist for more details.

Note: The above is based on a minimum 6-night stay, on the following basis:

- At least 2 of the above camps with 2 paying nights at each must be booked on the same itinerary to qualify for the 3rd night free at each camp. **Guests therefore pay for 4 nights and stay for 6 nights.**
- To book other Wilderness Safaris or Safari & Adventure Co. camps not mentioned above, in conjunction with this offer, a minimum of 3 paying nights at this additional camp is required. **Guests therefore pay for 5 nights and stay for 6.**
- No other specials (e.g. the ‘Stay for 7 and pay for 6’) may be used in conjunction with this offer.

## AN EXTRA NIGHT ON US... IN THE WILDERNESS (**VALID UNTIL JUNE 2010!**)



Book for 6 nights and get an extra night free! This incredible offer of an extra night free of charge for all full paying guests who are booked for 6 nights or longer now remains valid until June 2010. This applies across the board to all camps in all regions, with the exception of Mombo, Skeleton Coast Camp and Abu Camp. The 7 nights must be accumulated in one country. Your free night must be used in one of the camps already booked on the itinerary. **This is a 15% saving!**

*Valid for new bookings only and for travel until 30 June 2010.*

## AN EXTRA NIGHT ON US IN ZAMBIA....STAY 3 PAY 2 (**NEW**)



Experience the exciting Wilderness Safaris camps in Zambia with a **33%** saving on accommodation. Get one night free when staying for a minimum of 3 nights in one or more of the following camps:

**Kafue National Park:** Shumba Camp, Kapinga Camp and Busanga Bush Camp. **South Luangwa National Park:** Kalamu Lagoon Camp

*Valid for all new bookings travelling during June, July and November 2010. This special may not form part of the "Stay 7 Pay 6" special.*

## BUSANGA PLAINS BALLOON SPECIAL (**NEW FOR THE KAFUE, ZAMBIA**)



Experience a complimentary Ballooning activity on the expansive and breathtaking Busanga Plains. This is based on a minimum of 3 nights in any one of the following camps: Busanga Bush Camp, Kapinga Camp and Shumba Camp.

*Valid for all new and existing bookings travelling August, September and October 2010. This complimentary ballooning activity is limited to one per person per stay and is weather dependent. Additional balloon activities can be booked at an additional cost.*

## SAFARI FOR ALL SEASONS (**EXTENDED**)



The Safari for All Seasons has been extended into 2010. This 9-day exciting wildlife and nature safari covers a range of habitats and countries, from the Central Kalahari Game Reserve to the Okavango Delta, Namibia's Caprivi Strip and the world-famous Victoria Falls. Highly competitive pricing – contact your journey specialist for rates.

*Valid for new bookings and travel up to and including 30 June 2010.*

## MALAWI BUSH AND BEACH SPECIAL (**NEW**)



Experience Malawi in the upcoming summer months with this great Bush and Beach special. Enjoy 3 nights at Mvuu Camp (Full board basis and 2 scheduled daily camp activities included) and 3 nights at Chintheche Inn (Full board basis). All shared road transfers from and to Lilongwe are included. Priced from \$1310 per person sharing nett and will be based on a minimum of two guests sharing.

*Valid for all new bookings and for travel from 17 December 2009 until 28 February 2010.*

## SKELETON COAST CAMP – PARTNER TRAVELS HALF PRICE (**50% SAVING**)



Skeleton Coast Camp lies within Namibia's vast Skeleton Coast Park in a private concession – one of the most spectacular settings on the continent – and calls to those seeking a truly remote wilderness experience. On any new booking of 2 full paying guests sharing accommodation at this iconic camp, the partner receives a **50% saving off the full package price.**

*Valid for new bookings and travel up to and including 31 December 2009.*

## ZAMBIA AND ZIMBABWE PACKAGES – (**EXTENDED**)



Explore our prime areas in Zimbabwe and Zambia with these special 'circuit' rates which allow you to truly enjoy the amazing wild areas of Kafue, South Luangwa, Hwange and Mana Pools national parks. Three nights in each area/camp, with most packages including transfers, at an incredible price! Packages start nett at only US\$515 for a 3-night stay on the Mana Canoe Trail, US\$1005 at Ruckomechi Camp or US\$875 at Lufupa Tented Camp – just a few of the options available.

*Valid for new bookings for travel up to and including 30 November 2010.*

## BAOBABS AND BEACHES – 10-NIGHT SOUTH AFRICAN SAFARI (**EXTENDED**)



Experience the best of both South Africa's bushveld and coastline on this amazing 10-night itinerary, which includes 4 nights at Pafuri Camp, 1 night at Tintswalo Waterfall or The Grace in Johannesburg, and 5 nights at Rocktail Beach Camp.

*This incredible offer starts from R17 460 per person sharing nett – contact your journey specialist for all rates and a detailed itinerary.*

*Valid for new bookings for travel up to and including 30 November 2010.*

## COMPLIMENTARY HELICOPTER TRANSFERS TO/FROM NORTH ISLAND (**EXTENDED**)



Take advantage of the "Extra night on us... on North Island" (pay for 6, stay for 7) and we will provide complimentary return scheduled helicopter transfers between Mahé and the island.

Note: The transfers are on a shared and scheduled basis and are not applicable to night transfers.

*Valid for new bookings only and for travel before 28 February 2010, excluding 15 December 2009 up to and including 15 January 2010.*

## AN EXTRA NIGHT ON US... ON NORTH ISLAND (**15% SAVING**)



North Island's amazing offer of an extra night free of charge for all full paying guests who are booked to stay 6 nights or longer on the Island has been extended.

*Valid for new bookings only and travel before 30 June 2010.*

## TWO EXTRA NIGHTS ON US... ON AN EXPLORATION (**20% SAVING**)



When booking 2 adults on the Great Namibian Journey or Great Wilderness Journey, **the second adult gets a 20% saving!** Both these Journeys are Discoverer Explorations, luxury mobile safaris that have the advantage of superb locations, and itineraries that provide exciting encounters with the most diverse, renowned and scenic areas in Botswana and Namibia.

*Valid for new bookings only and for travel until 30 June 2010.*

**COMBINE SPECIAL OFFERS WHERE POSSIBLE AND GET EVEN MORE VALUE.  
CONTACT YOUR JOURNEY SPECIALIST FOR MORE INFORMATION.**



### Terms and Conditions for all:

- New bookings only; no conversion of confirmed bookings.
- Bookings to be made before 28 February 2010.
- Validity of each special outlined above.
- All extra night offers in Botswana and Namibia can only be granted when the camps are being combined with Sefofane flying or where the self-drive package has been booked through one of our sales offices.
- Wilderness Safaris standard booking terms and conditions apply.
- Errors and Omissions Excepted – 01/12/09



**WILDERNESS**  
S A F A R I S

Our Journeys Change People's Lives